



Instructions on pages 80-85

Happiness Is Homegrown

PRODUCE STAND TISSUE BOX COVER

(Shown on page 31)

Size: 8" w x 6 3/4" h x 7" d

(Fits a 4 1/4" w x 5 1/4" h x 4 1/4" d boutique tissue box.)

Supplies: Worsted weight yarn, three 10 1/2" x 13 1/2" sheets of clear 7 mesh plastic canvas, and #10 tapestry needle

Stitches Used: Backstitch, Cross Stitch, French Knot, Gobelins Stitch, Mosaic Stitch, Overcast Stitch, Smyrna Cross-Stitch, and Tent Stitch

Instructions: Follow charts to cut and stitch pieces, leaving shaded areas unworked. Match symbols and use Overcast Stitches to join pieces together as instructed below.

Using tan yarn, join Front Vegetable Display to pink shaded thread on Front between ■'s and ▲'s. Join Front Vegetable Display to Front Stand between ✱'s and ✕'s. Using white yarn, match ✱'s and join Front Stand to one Right Stand End piece along short edge of Front Stand. Matching ✕'s, join Front Stand to one Left Stand End piece. Using tan yarn, join Front Vegetable Display to Right Stand End between ■'s and ✱'s. Join Front Vegetable Display to Left Stand End between ✕'s and ▲'s. Repeat for Back pieces.

Using tan yarn, join one Side Vegetable Display piece to yellow shaded thread on Side #1 between ■'s and ▲'s. Join Side Vegetable Display to one Side Stand piece between ✱'s and ✕'s. Using white yarn, match ✱'s and join Side Stand to one Right Stand End piece along short edge of Side Stand. Matching ✕'s, join Side Stand to one Left Stand End piece. Using tan yarn, join Side Vegetable Display to Right Stand End between ■'s and ✱'s. Join Side Vegetable Display to Left Stand End between ✕'s and ▲'s. Repeat for Side #2 pieces.

Using white yarn, join Front to Side #1 between ▼'s and ◆'s. Join Front to Side #2 between ◆'s and ◆'s. Join Back to Sides. Join Front to Side #1 and Stand End pieces through four thicknesses of plastic canvas from ★'s to ☆'s. Join Front to Side #2 and Stand End pieces from ◆'s to ☆'s. Join Back to Sides and Stand Ends.

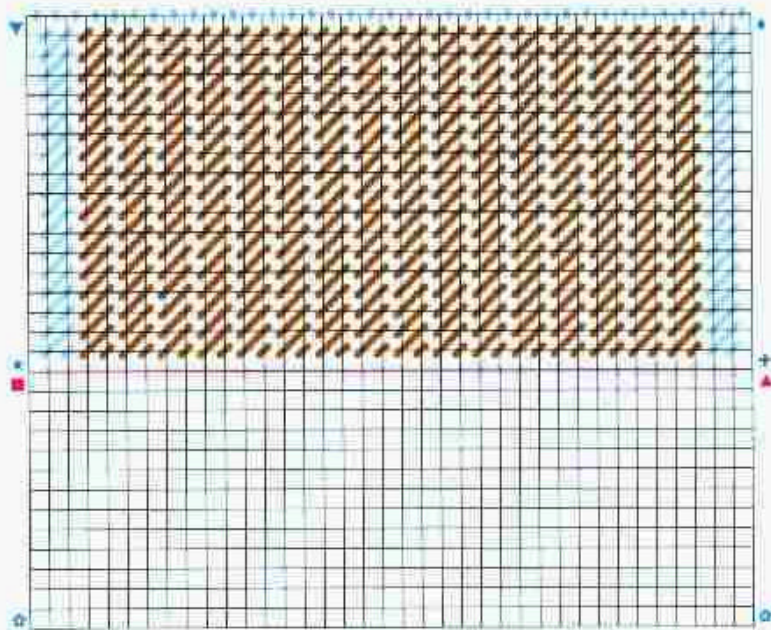
Using green yarn, join one long edge of Awning Top to Awning Front. Join remaining long edge of Awning Top to Awning Back. Referring to photo for yarn colors used, join Awning to Front, Back, and Sides.

Using white yarn, tack one Sign piece to Awning Front between ▼'s. Repeat to tack remaining Sign piece to Awning Back.

Design by Dick Martin.

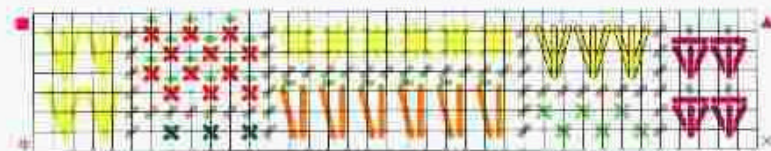
Front/Back

(38 x 32 threads) (stitch 2)



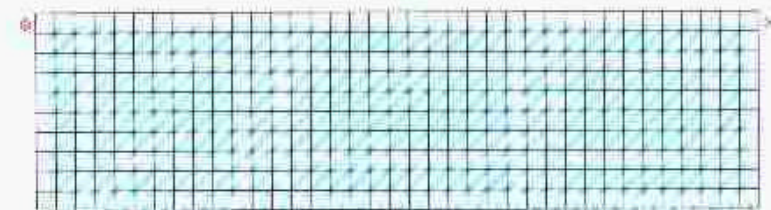
Front/Back Vegetable Display

(38 x 8 threads) (stitch 2)

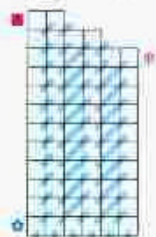


Front/Back Stand

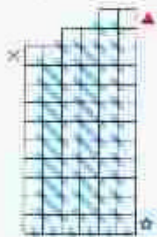
(38 x 11 threads) (stitch 2)



Right Stand End
(7 x 13 threads)
(stitch 4)

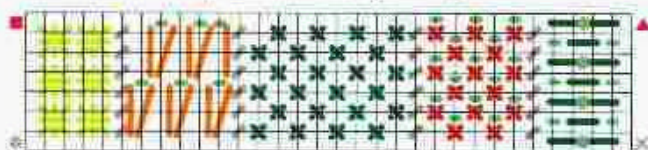


Left Stand End
(7 x 13 threads)
(stitch 4)

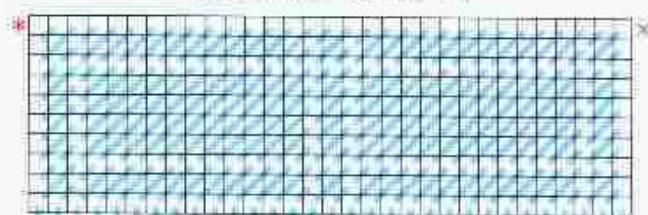


COLOR (NL #)		COLOR (NL #)	
	white (41)		lt green (25)
	yellow (19) - 2 strands		green (28)
	orange (52)		dk green (29)
	orange (52) - 2 strands		tan (18)
	pink (07)		brown (14)
	red (02)		green (28) French Knot
	burgundy (03)		

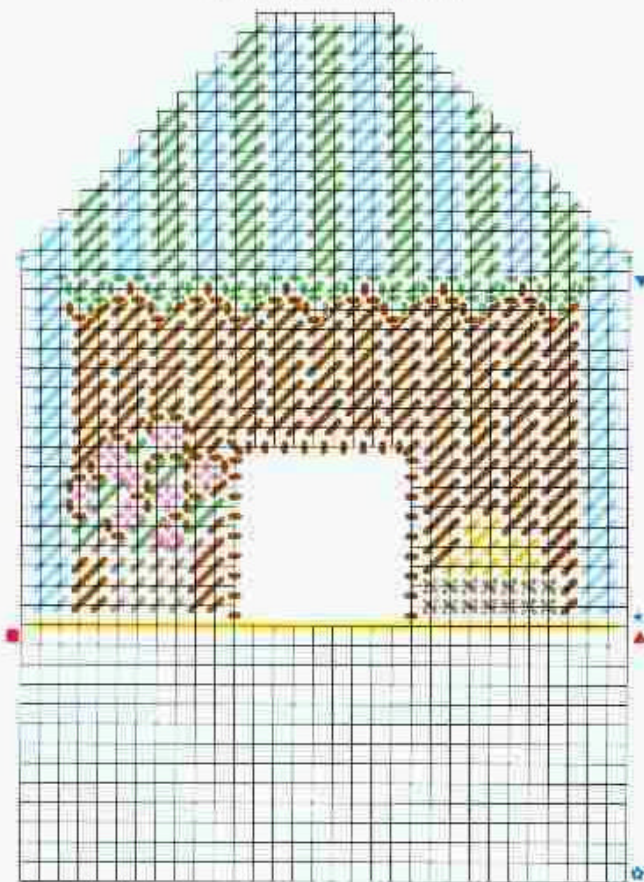
Side Vegetable Display
(32 x 8 threads) (stitch 2)



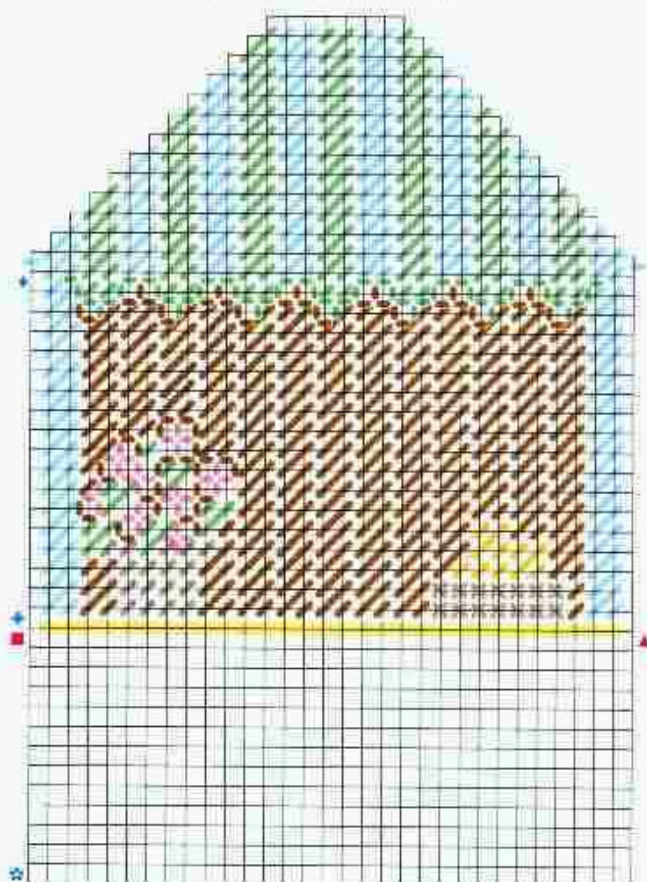
Side Stand
(32 x 11 threads) (stitch 2)



Side #1 (32 x 45 threads)



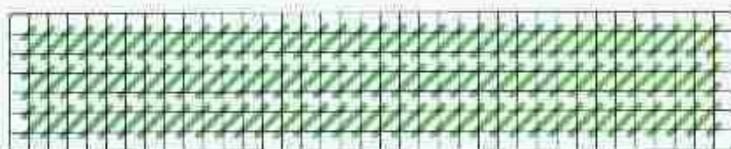
Side #2 (32 x 45 threads)



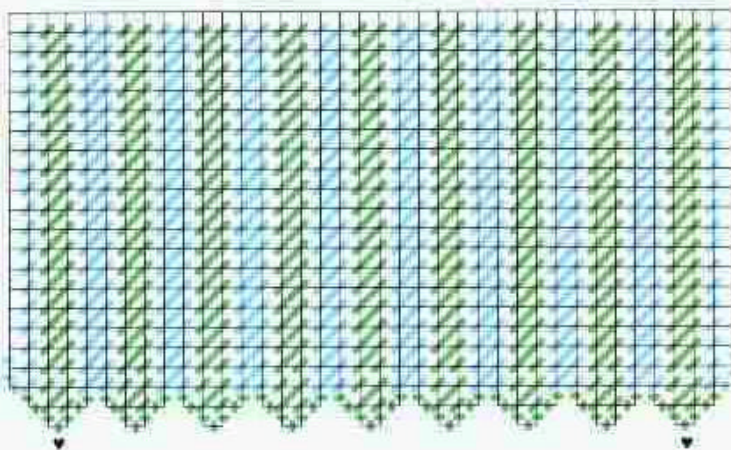
Continued on page 82

COLOR (NL #)	
	white (41)
	red (02)
	green (28)

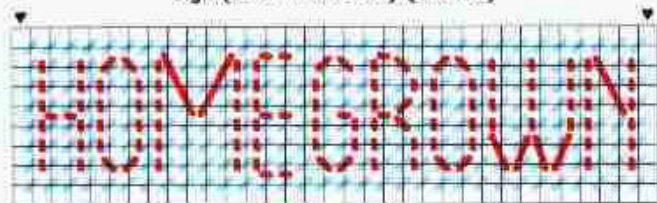
Awning Top (38 x 8 threads)



Awning Front/Back
(38 x 22 threads) (stitch 2)



Sign (34 x 10 threads) (stitch 2)



ASPARAGUS MAGNET

(Shown on page 30)

Size: 2" w x 4" h x 1/2" d

Supplies: Worsted weight yarn, 10 1/2" x 13 1/2" sheet of clear 7 mesh plastic canvas, #16 tapestry needle, magnetic strip, and craft glue

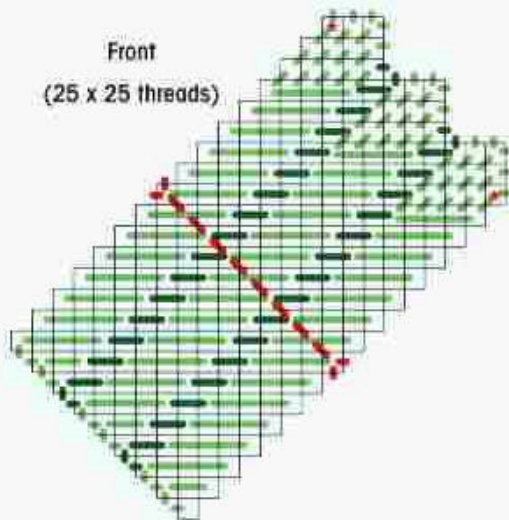
Stitches Used: Gobelin Stitch, Overcast Stitch, and Tent Stitch

Instructions: Follow charts to cut and stitch pieces. Using dk green yarn, match ★'s and join Front to Back. Tie a 12" length of red yarn into a bow and trim ends. Glue bow to Front. Glue magnetic strip to Magnet.

Design by Dick Martin.

COLOR (NL #)	
	red (02)
	green (28)
	dk green (29)

Front
(25 x 25 threads)



Back
(25 x 25 threads)

