



## **Baby Bassinet**

---

- A -- Skirt Front -- 31 X 36 Holes – Cut 2.  
B – Skirt Back & Front – 29 X 31 Holes – Cut 2.  
C – Blanket Top – 29 X 36 Holes – Cut 1.  
D – Side Ruffle #1 – 16 X 42 Holes – Cut 2 – Red X cut out.  
E – Side Ruffle #2 – 14 X 42 Holes – Cut 4.  
F – Front & Back Ruffle #1 – 16 X 35 Holes – Cut 2 – Red X cut out.  
G – Front & Back Ruffle #2 – 14 X 35 Holes – Cut 3.  
H – Back Ruffle – 14 X 35 Holes – Cut 1.  
I – Hood Back – 25 X 28 Holes – Cut 1.  
J – Hood Top – 15 X 65 Holes – Cut 1.  
K – Hood Liner Back – 24 X 27 Holes – Cut 1.  
L – Hood Liner Top – 9 X 62 Holes – Cut 1.  
M – Pillow Front & Back – 15 X 23 Holes – Cut 2.
- 



2 yds yellow ribbon  $\frac{3}{8}$  satin ribbon.  
Yellow 10 yds  
Eggshell 78 yds.  
Baby yell 82 yds.

### **Assembly**

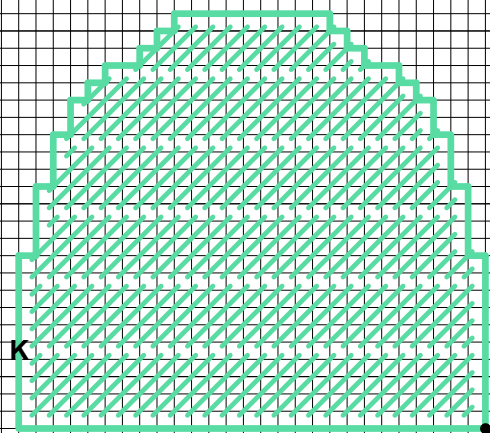
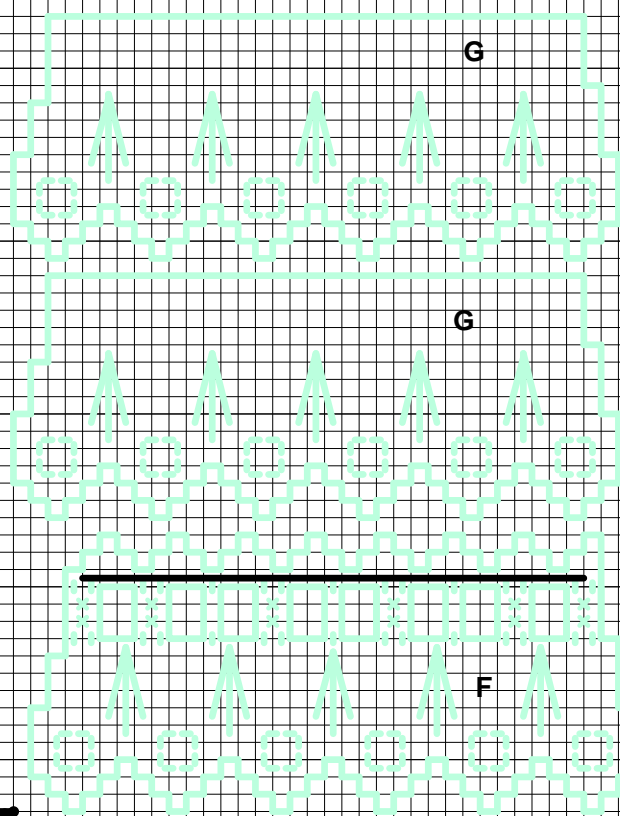
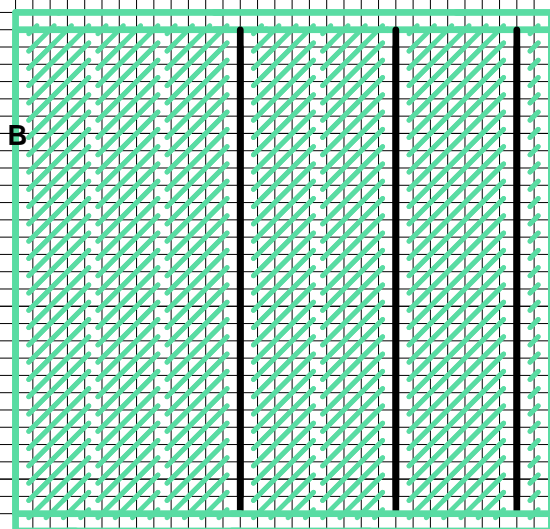
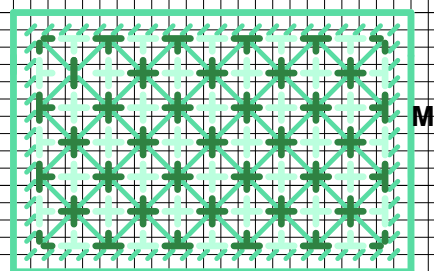
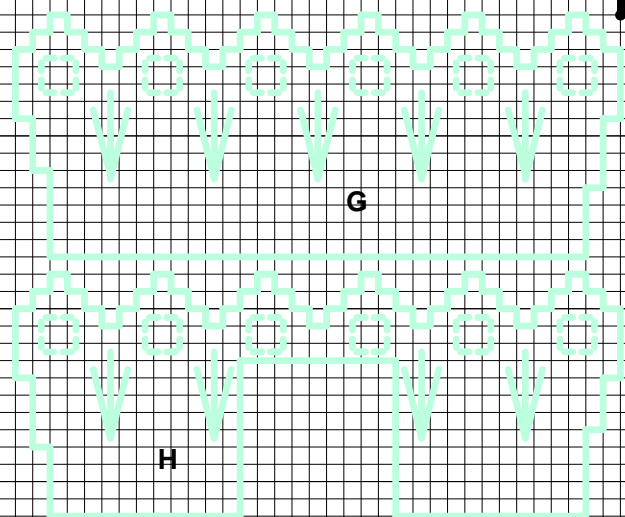
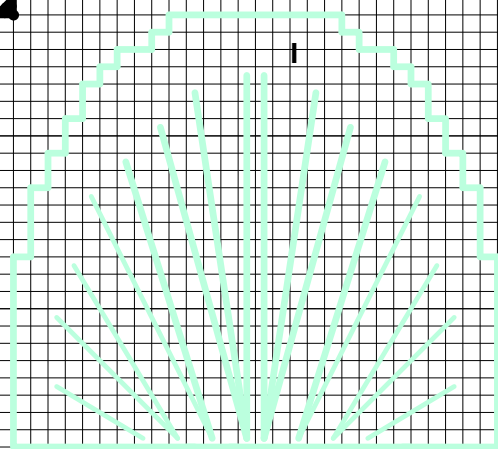
- 1/ With baby yellow, whipstitch 'A – C' pieces together. Forming skirt assembly; Overcast unfinished bottom edges.
- 2/ With eggshell, whipstitch side of two 'E' and two 'G' pieces together, forming bottom ruffle; Overcast unfinished edges.
- 3/ Omitting cut-out edge on back 'B' whipstitch bottom ruffle to lower portion of skirt assembly.
- 4/ Whipstitch side edges of remaining 'E' remaining 'G' and 'H' together, forming centre ruffle; Overcast unfinished bottom edges.
- 5/ Whipstitch opening on 'H' to cut-out on back 'B' whipstitch remaining edge of centre ruffle to skirt assembly, Overcasting unfinished edge of cut-out as you work.
- 6/ Whipstitch side of 'D' and 'F' pieces together forming top ruffle; Overcast unfinished edges.
- 7/ Thread ribbon in ruffle. Whipstitch top ruffle to skirt assembly.

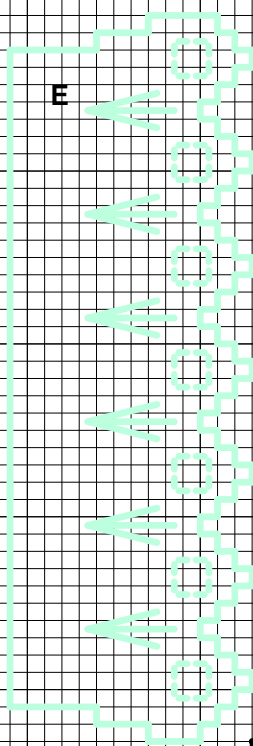
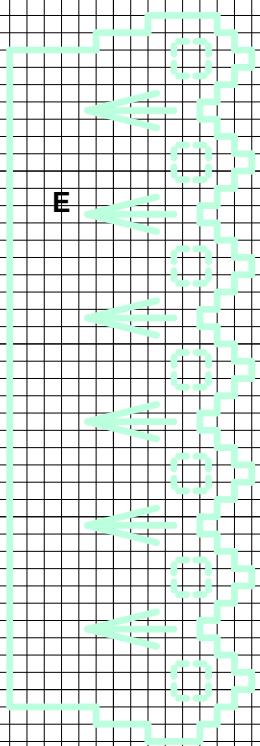
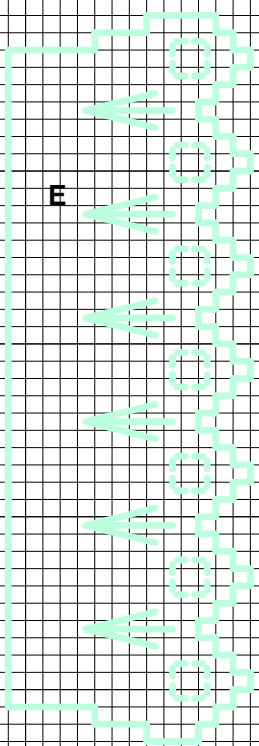
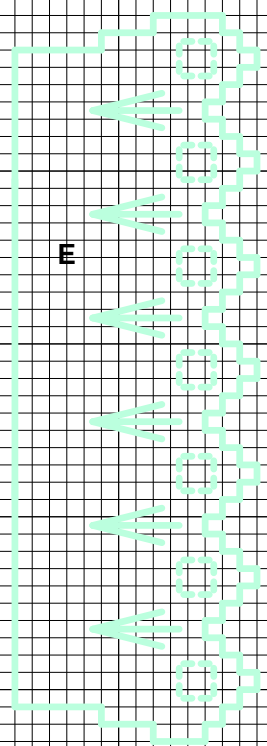
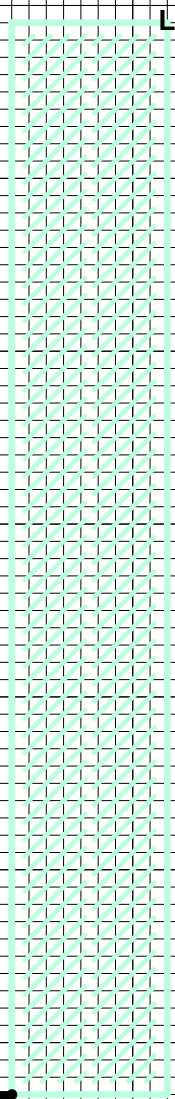
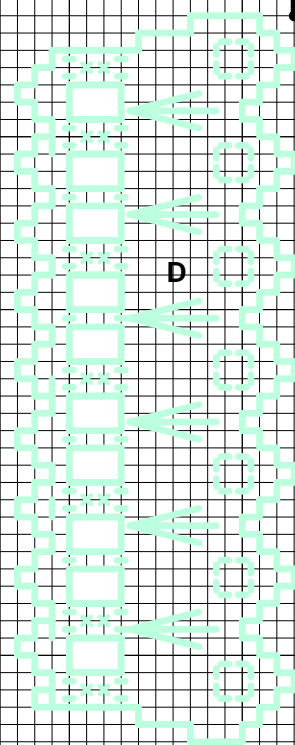
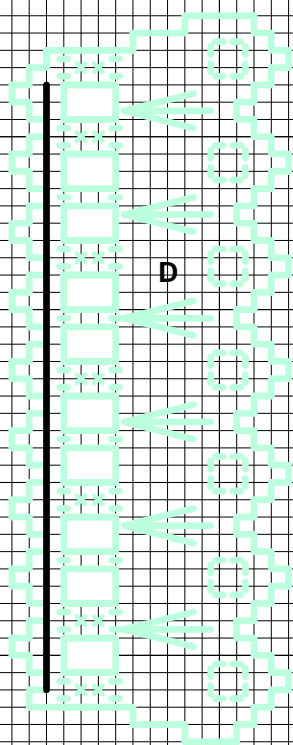
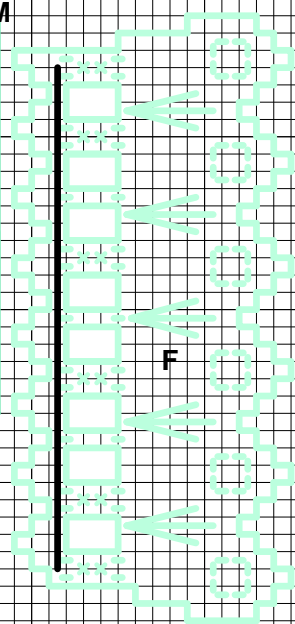
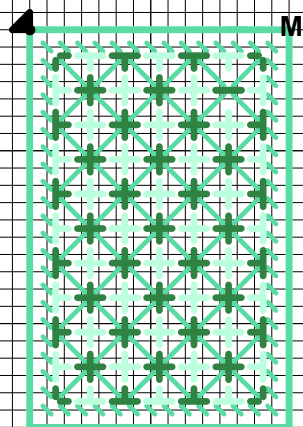
### **Hood Assembly**

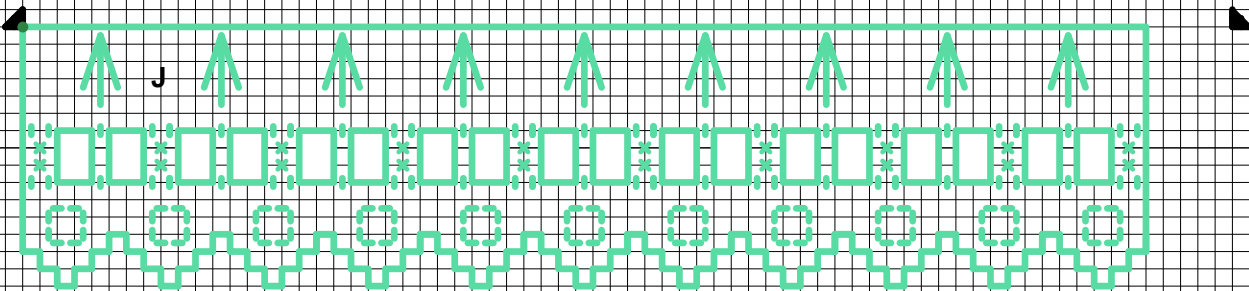
- 1/ With eggshell whipstitch 'I' and 'J' pieces together, forming hood. Thread ribbon through holes.
- 2/ With baby yellow whipstitch 'K' and 'L' pieces together, forming hood liner.
- 3/ Slide liner inside hood with baby yellow, whipstitch short edges of 'J' and 'L' pieces together.
- 4/ With eggshell overcast unfinished edges of hood. Glue to main skirt assembly so hole is at back.

### **Pillow assembly**

- 1/ whipstitch 'M' pieces together and just before closing stuffing with piece of cotton wool and close edge.







Yellow 10 yds  
 Eggshell 78 yds  
 Baby Yellow 82 Yds

